

Seattle Maritime Academy: Marine Deck Technology and Marine Engineering Technology

Thomas Crotty- Engineering Faculty

DISCOVER



SEATTLE COLLEGES
North · Central · South

How much do you know about the Maritime Industry?

For each question, type your answer into the chat.

What is the name of the qualified deck-hand on board a merchant ship?

- A. Ordinary seaman
- B. Newbie
- C. Able-seaman
- D. Captain

How much do you know about the Maritime Industry?

For each question, type your answer into the chat.

What is the name of the qualified rated engineer on board a merchant ship?

- A. Qualified Member of the Engineering Department
- B. Wiper
- C. Assistant Engineer
- D. Chief

How much do you know about the Maritime Industry?

For each question, type your answer into the chat.

What documents or qualifications do you need to work on ships in the US?

- A. College degree
- B. Coast Guard license
- C. Merchant Mariner Credential
- D. All of the above

What is the program?

Marine Engineering Technology

Graduates learn the skills of a Qualified Member of the Engineering Department. In the classroom, labs, simulators and aboard training vessels, you will learn the basics of shipboard engineering, including diesel and auxiliary machinery maintenance.

Where is this program offered?

Seattle Maritime Academy,
Seattle Central College

Entry Requirements

High School Diploma
Merchant Mariner Credential



What is the program?



Where is this program offered?

Seattle Maritime Academy,
Seattle Central College

Marine Deck Technology

Graduates learn the skills of an Able Seaman. In the classroom and aboard training vessels, you will learn how to steer a ship, how to stand a lookout watch, how to work on deck handling lines and how to maintain vessels.

Entry Requirements

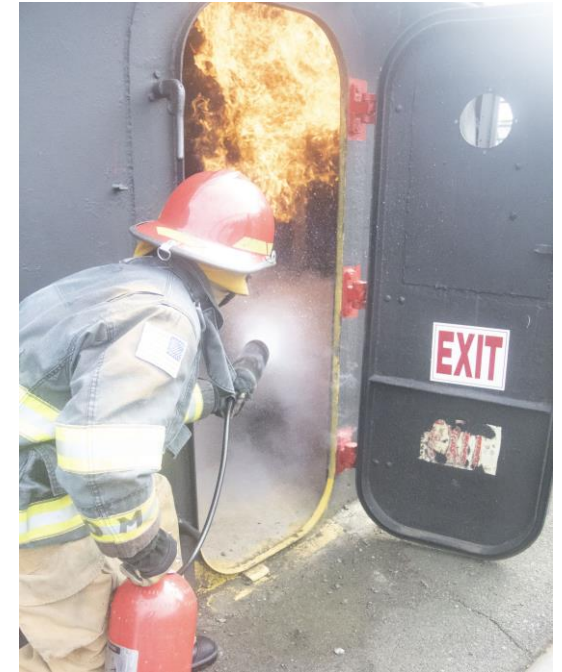
High School Diploma
Merchant Mariner Credential

Education Pathway

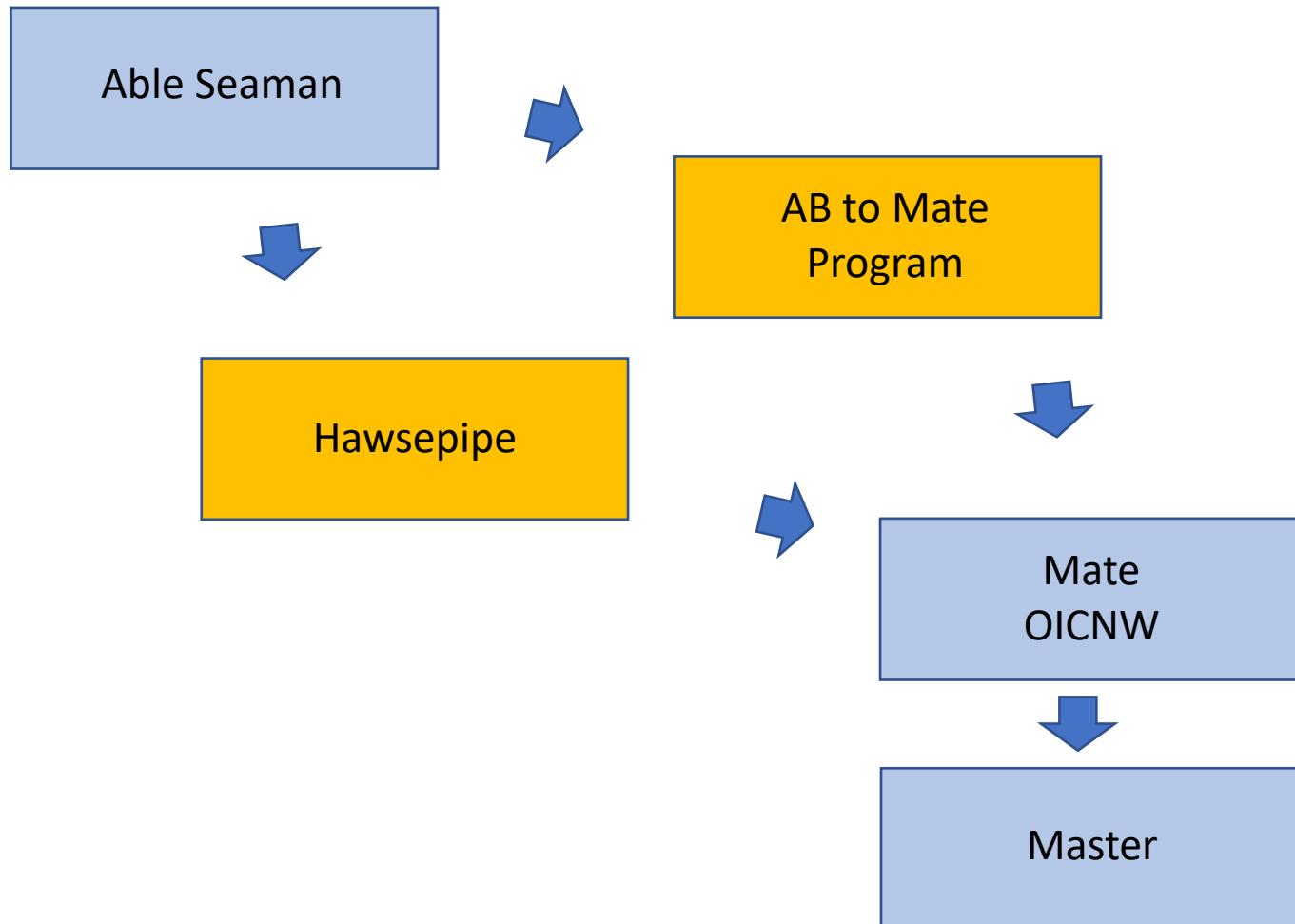
Ordinary Seaman
Wiper

Able Seaman
Program

Able Seaman



Education Pathway



Education Pathway

Ordinary Seaman
Wiper

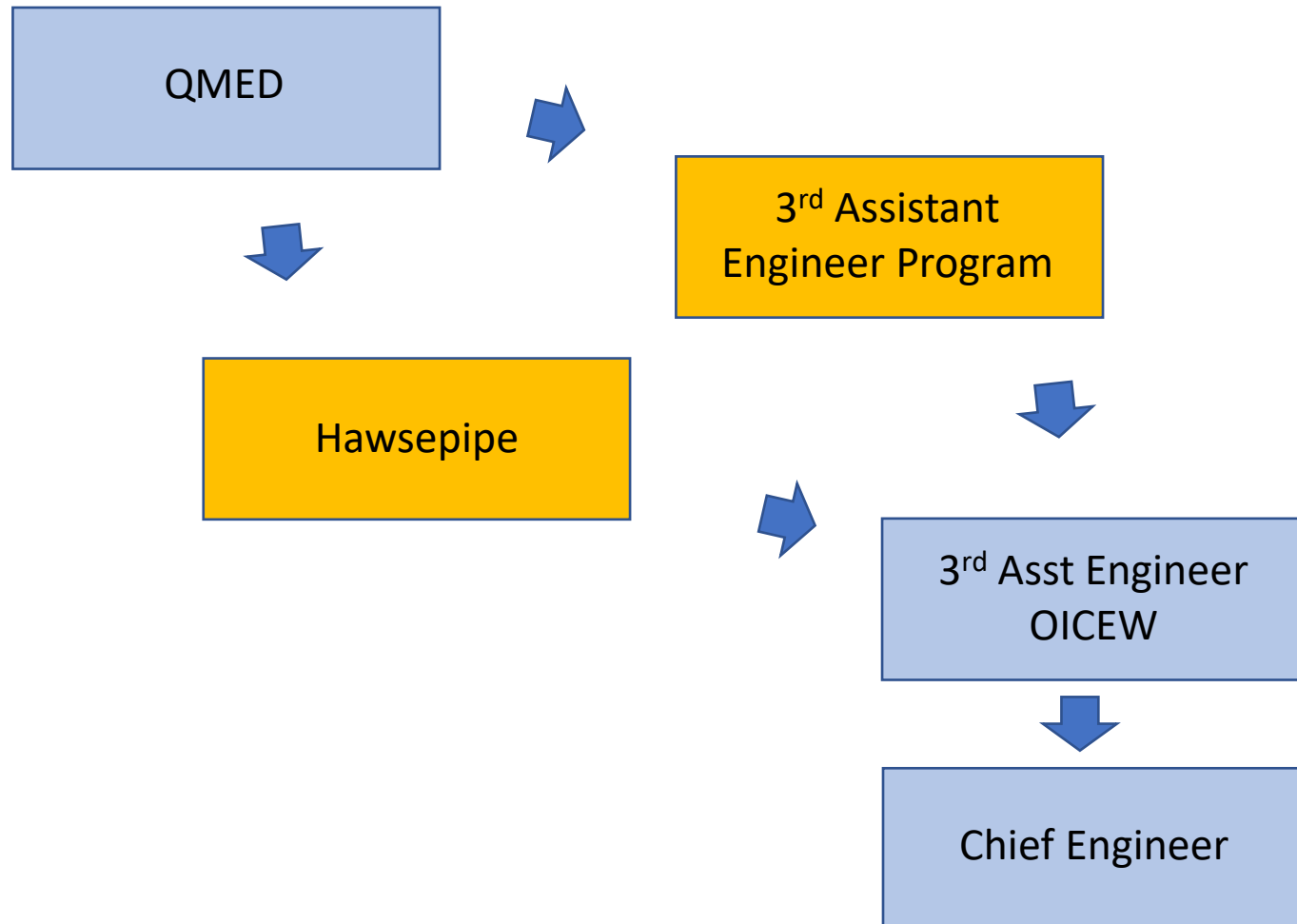


QMED
Program



Qualified Member
of the Engineering
Department

Education Pathway



What do you learn?

Faculty

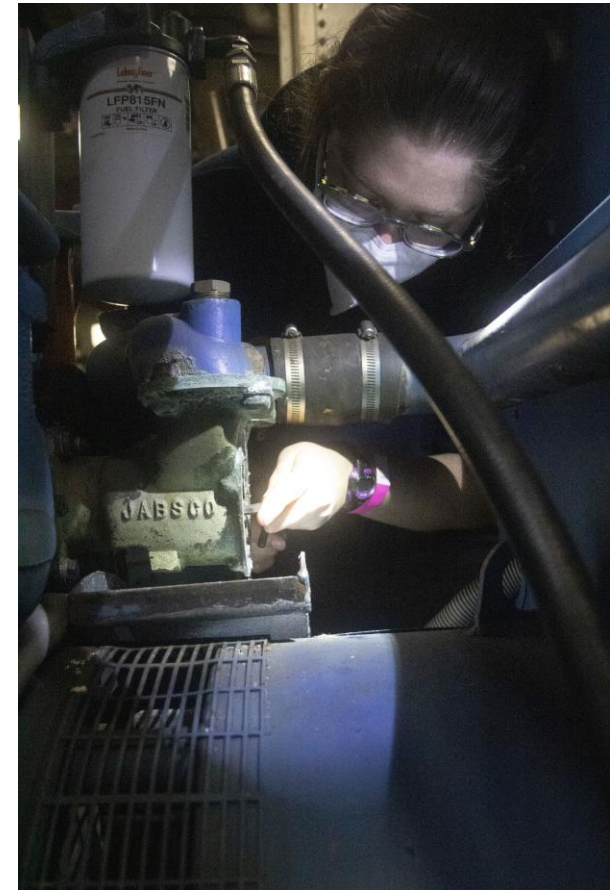
Deck: Captains with experience in passenger vessels, tugs, ferries, tankers

Engineering: Licensed and Chief engineers with experience in diesel, steam, and gas turbine plants

What do you learn?

Topics

- Basic Seamanship
- Watchstanding
- Basic vessel construction
- Use of tools
- Maritime safety
- Survival craft
- Introduction to shipboard engineering



Careers/Jobs



Deckhand: Average salary \$48K annually
28 days on/28 days off

Oiler: Average salary \$63K annually
28 days on/28 days off



Q & A

Seattle Maritime Academy

Dean: Dale Bateman

Admin support: Barbara Ceiga

Contact Information

Email: sma.central@seattlecolleges.edu

Phone: 206-934-4305

Next Session

Return to Main Session

(select “Leave Breakout Room” to return)

