

# Wear a cloth face covering or mask to reduce the spread of COVID-19



You may have the virus *even if you don't have symptoms*.

Protect yourself and others by wearing a cloth face covering or mask.



To request this document in another format, call 1-800-525-0127.  
Deaf or hard of hearing customers, please call 711 (Washington Relay) or email [civil.rights@doh.wa.gov](mailto:civil.rights@doh.wa.gov).

I wear a mask because

o| \$E Å ASVZ/19ZÁ

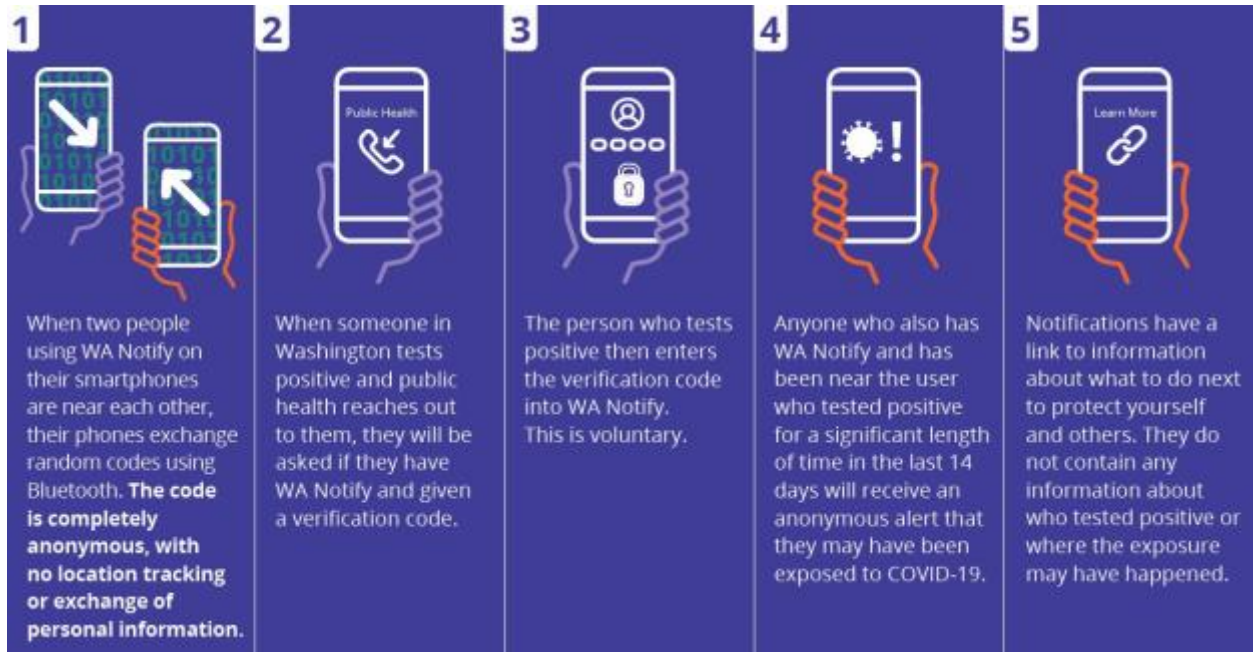


Maintain Physical-distance

Click video





## Washington Exposure Notifications - WA Notify



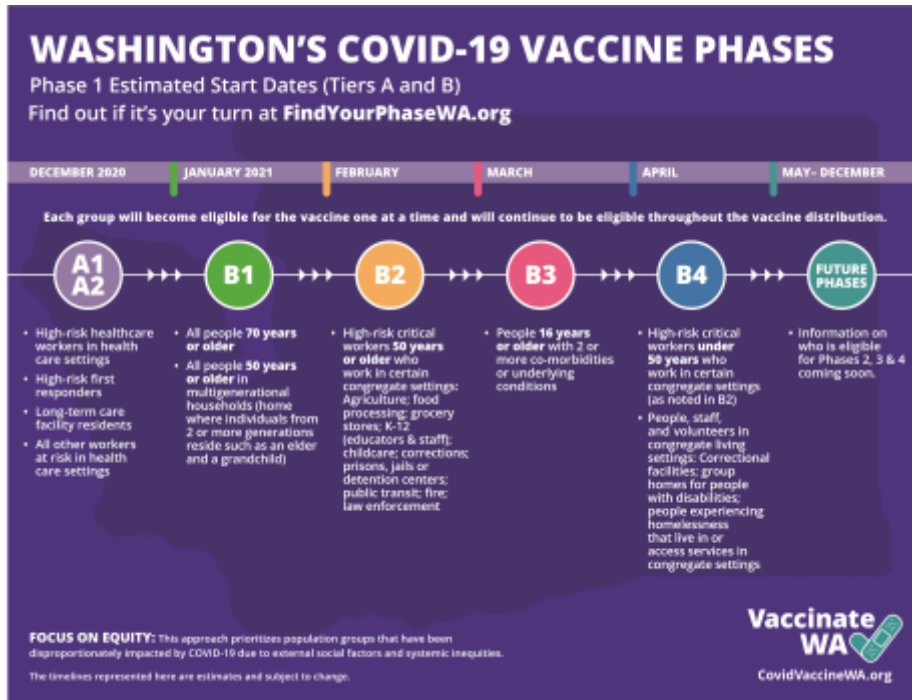
Washington Exposure Notifications (also known as WA Notify) is a new tool that works through smartphones, without sharing any personal information, to alert users if they may have been exposed to COVID-19. It is completely private, and doesn't know or track who you are or where you go.

\* [Additional Languages](#)

### How do I add WA Notify to my phone?

 <b>On an iPhone</b> , enable Exposure Notifications in Settings <ul style="list-style-type: none"><li>• Go to Settings</li><li>• Scroll down to Exposure Notifications</li><li>• Click "Turn On Exposure Notifications"</li><li>• Select United States</li><li>• Select Washington</li></ul>	 <b>On an Android phone:</b> <ul style="list-style-type: none"><li>• Go to the <a href="#">Google Play Store</a></li><li>• Download the WA Notify app</li></ul>
--	--

# Washington's COVID-19 Vaccine Phases



## 1 - [Check Your COVID-19 Vaccine Eligibility](#)



DOH 348-785 January 2021

# GLOSSARY OF TERMS

## CO-MORBIDITIES

Morbidity is a medical term that means illness or disease. Co-morbidities means more than one illness or disease occurring in one person at the same time. Phase 1 – Tier 3 includes people with 2 more comorbidities or underlying conditions that put them at increased risk for severe illness if infected with COVID. This list of these conditions can be found on the CDC website: <https://www.cdc.gov/coronavirus/2019-ncov/need-extra-precautions/people-with-medical-conditions.html>.

## CONGREGATE SETTING

An environment where individuals work and/or reside in an enclosed space and where they are interacting with a high volume of people over an extended period of time and not able to consistently maintain physical distance.

## CRITICAL WORKERS

Individuals working in an industry that maintains critical infrastructure for social and economic systems in our state. (See reverse side for detailed list.)

## HIGH-RISK WORKERS IN A HEALTHCARE SETTING

Workers who are at higher risk of COVID-19 infection because they meet one or more of the following criteria:

- Administer COVID-19 testing or handle COVID-19 specimens
- Administer COVID-19 vaccine or have patient contact in a COVID-19 vaccination site.
- Work at a community-based, congregate living facility (for example, long-term care facility, adult family home or residential care community) where people over 65 years old receive care, supervision or assistance.
- A professional care provider to someone who is at higher risk of severe outcomes if infected with COVID-19 (for example, home health aide, dialysis provider, or cancer treatment provider).

## HIGH-RISK WORKERS IN A HEALTHCARE SETTING (CONT)

- Worker (for example, healthcare provider, security, environmental management) in a setting that provides direct care for suspected or confirmed COVID-19 patients.
- First responder (for example, EMS, police or firefighter) in settings where direct care is provided to suspected or confirmed COVID-19 patients.
- Worker at high risk of infection and transmission of COVID-19 because of exposure to the general public.

## LONG-TERM CARE FACILITY

For the purposes of the vaccine allocation guidance, long-term care facilities are defined as community-based, congregate living settings where most individuals over 65 years of age are receiving care, supervision, or assistance and are unable to reside independently in the community.

## MULTIGENERATIONAL HOUSEHOLD

Household where individuals from 2 or more generations reside such as an elder and a grandchild.

## WORKERS IN HEALTHCARE SETTINGS

Includes the full spectrum of workers at health agencies including all types of staff (e.g., contracted, part-time, unpaid/volunteer) and the spectrum of staff who provide services (e.g., ambulatory, direct patient care, support services).

To request this document in another format, call 1-800-525-0127. Deaf or hard of hearing customers, please call 711 (Washington Relay) or email [civil.rights@doh.wa.gov](mailto:civil.rights@doh.wa.gov).



You have completed this week's COVID-19 Health and Safety Training  
In order to receive credit for training participation, you must submit your details here:  
[click here to submit.](#)

If you have questions about this or any other environmental health & safety issues, please, email  
[healthandsafety@seattlecolleges.edu](mailto:healthandsafety@seattlecolleges.edu).