

2011 SPOTLIGHT

on the **Seattle Community Colleges**



SUCCESS

FOR OUR STUDENTS & REGION

CLOSE-UP

ON OUR COLLEGES

INNOVATIONS

THAT MAKE A DIFFERENCE



Seattle **CENTRAL** Community College | **NORTH** Seattle Community College
SOUTH Seattle Community College | SVI Seattle Vocational Institute | eLearning

SEATTLE
COMMUNITY
COLLEGES



Mission and Vision *of the Seattle Community Colleges*

Mission

The Seattle Community Colleges will provide excellent, accessible educational opportunities to prepare our students for a challenging future

Vision

The Seattle Community Colleges will be learning-centered...

- in providing high-quality and innovative education
- in preparing our students for success and lifelong learning

Strategic Goals

Student Success – Increase student learning and achievement

- Improve student achievement in pre-college math and English and college-level math for all students
- Increase the number of students completing degrees and certificates
- Increase academic success of students transferring to four-year institutions

Partnerships – Build community, business and educational partnerships

- Increase awareness of the significant economic impact of the Seattle Community Colleges
- Increase professional-technical program graduates to respond to local industry workforce needs
- Increase private, foundation and local funding

Innovation – Increase innovation and improve organizational effectiveness

- Increase innovative instructional options for students
- Improve effectiveness, efficiency and responsiveness of administrative systems
- Increase recognition of the Seattle Community Colleges as an outstanding place to work

You are here



Seattle Community Colleges

- The Seattle Community Colleges are the flagship district in the state, **educating more than 51,000 students a year** at 3 colleges, a technical institute, and 4 specialized training centers
- With nearly 3,000 international students, we have the **largest community college international program in the state**, and are among the top 10 community college international programs in the country
- Our district positively **impacts the King County economy by \$1.1 billion a year**, as a result of college operations and student spending and productivity, including the higher earning power resulting from their education and training

Facts at a Glance – Seattle Community Colleges

Fall 2010 Profile*

Students

Median age	29.3
Ethnic diversity	49%
Male / female	46% / 54%
With bachelor's or higher degrees	18%
Employed	51%
full-time	27%
With dependents	29%
single parents	9%
Full-time / part-time attendance ..	41% / 59%

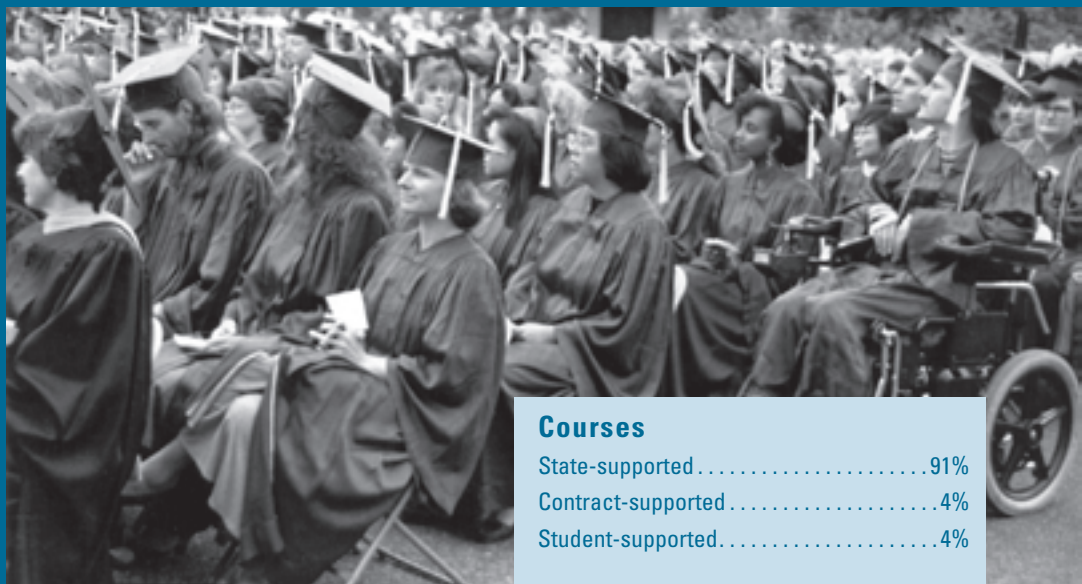
Programs

College Transfer	37%
Workforce Education	47%
Basic Skills	14%
Continuing Education & Other	3%

Special Enrollments 2009–10

(Unduplicated headcount across the district)	
Distance Learning	11,214
Running Start	1,127
International Contract	2,906
Worker Retraining	2,241

* Source: Seattle Community College District database. Fall quarter based on state-funded enrollment unless otherwise noted.



51,000 students
educated annually

Courses

State-supported	91%
Contract-supported	4%
Student-supported	4%

Degrees & Certificates 2009–10

Annual awarded	3,877
----------------------	-------



Employees 2009–10

(State-funded)

Total	1,937
Teaching faculty	1,200
full-time / part-time	365 / 837
Non-teaching faculty	19
Classified	480
Exempt	240

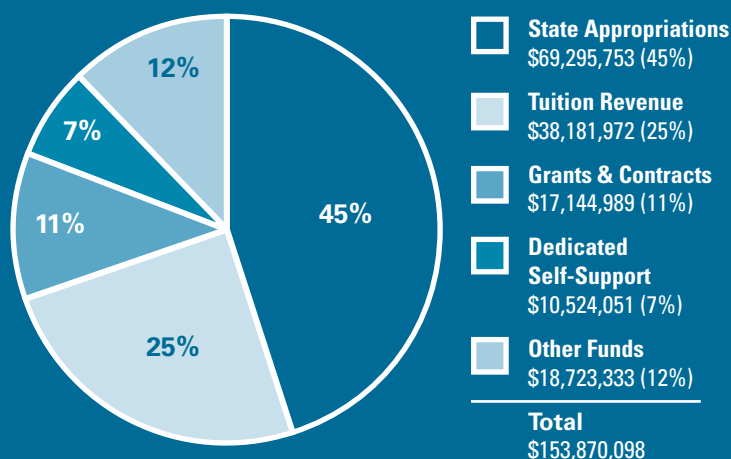
Seattle Community Colleges are most efficient higher ed system in the state

The Seattle Community College District is consistently ranked as one of the most financially efficient higher education institutions in the state. Centralized business functions such as payroll, hiring, purchasing and telecommunications increase productivity and reduce process time. As a result, we have the lowest administration:student dollar ratio in the state, and spend half as much as the national average for community colleges.

Average Administrative Spending per FTE

\$1,000	Seattle Community Colleges
\$2,492	National Average for CCs
\$2,221	Wash. Regional Universities
\$3,201	Wash. Research Universities

Total Operating Funds 2010–11



Tuition is set by the state legislature and adopted on a statewide basis by the State Board for Community and Technical Colleges; quarterly tuition for a full-time student (equaling 15 credits) was \$1045 for the 2010–2011 year.

Measures of Success



*Left to right:
Seattle Central President Paul Killpatrick,
South Seattle President Gary Oertli,
Seattle Community Colleges Chancellor Jill Wakefield,
North Seattle President Mark Mitsui.*

The Seattle Community Colleges have educated and trained more than 1.5 million people since the college district was established in 1967 and—

- send graduates to work in the top companies in the region, and transfer more students to four-year colleges and universities than any other community college district in the state
- send more students and more students of color than any other community college district to the University of Washington, where they do as well or better than students who started at UW as freshman, both in GPA and in graduation rates
- have the largest community college international enrollment in the state, with nearly 3,000 students from more than 100 countries

The Seattle Community Colleges are nationally recognized for innovations in instruction, student services and programs, and—

- originated the I-BEST teaching model (integrated English, basic skills and technical training), which has become a nationally adopted model
- offer Bachelor of Applied Science degrees in Hospitality Management and Professional Technical Teacher Education at South, Applied Behavioral Science at Central, and are planning more
- offer opportunities for four-year degrees through partnerships with several universities on our campuses
- were the first community colleges in the country to adapt the Learning Communities model developed at The Evergreen State College
- generated almost \$109 million in grants and contracts and more than \$80 million for capital projects between 2007–11

Our graduates work in leading companies

Seattle Community Colleges graduates work in major corporations, small businesses, and in civic and non-profit organizations across the region.

Adobe Systems, Inc.

Alaska Airlines

Amazon.com

Associated Press

The Boeing Company

Canlis Restaurant

City of Seattle

Crowley Maritime Corporation

Dahlia Lounge

Eddie Bauer – Corporate Headquarters

GeoEngineers, Inc.

Getty Images

Kathy Casey Food Studios

KOMO 4 / KING 5 / KCPQ 13

Lease, Crutcher, Lewis

McKinstry

Microsoft Corporation

National Oceanic & Atmospheric Administration (NOAA)

Nordstrom, Inc.

Northwest Hospital & Medical Center / UW Medicine

Pacific Electronics

Pacific Science Center

Peace Corps

Penske Trucks

Perkins Coie

Ponti Seafood Grill

RealNetworks

REI

Seattle Art Museum

Seattle Children's Hospital

Sellen Construction Co.

Sound Mental Health

Space Needle

Starbucks Coffee Company – Regional Office

Swedish Medical Center

Todd Pacific Shipyards

University of Washington Medical Center

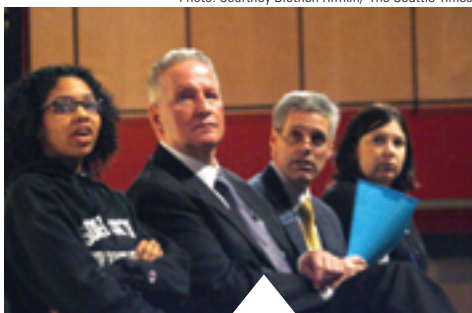
Virginia Mason Hospital & Medical Center

Whole Foods Market, Inc.

Wild Ginger

Wizards of the Coast

Photo: Courtney Blethen Riffkin/ The Seattle Times



South President Gary Oertli (second from left) at Chief Sealth International High School to announce the 13th Year Promise Scholarship to all graduating seniors.

South expands offer of tuition-free year

More than 200 Chief Sealth International High School seniors have a **free year of college** in their futures as the 13th Year Promise Scholarship program offered by South Seattle Community College expands to Chief Sealth. The **groundbreaking scholarship program**, the first of its kind in Washington state, guarantees every graduating senior the opportunity to attend South tuition-free for one year. Chief Sealth is South's second 13th Year Promise Scholarship high school, joining Cleveland High School, where the program was launched with the Class of 2008.

The 13th Year Promise Scholarship was developed to address the enormous difference just one year of college can make in a student's lifetime earnings and continuation in higher education. The scholarship is also designed to **increase access to higher education for under-represented groups**, including students of color, low-income and first-generation college students.

Read more about these stories and others at:

www.seattlecolleges.edu/district/chancellor/blog.aspx



Rendering: Schacht Aslani Architects

North's Opportunity Center among first in nation

Finding a new job or career retraining in these difficult times can be challenging, but the new Opportunity Center for Employment and Education at North Seattle is helping to ease the process. Open in Spring 2011, the **innovative center combines state services** for employment, social services, financial counseling, basic skills and further education in a **one-stop location**. At the center of Seattle's north end neighborhoods and close to the Northgate transit hub, the new building is on the southeast corner of the campus.

The Opportunity Center was championed in the Washington State Legislature by House Speaker Frank Chopp and by Rep. Phyllis Gutierrez Kenney, who sponsored the legislation. One of the **first of its kind in the country**, the new Center will integrate the resources of the Department of Social and Human Services, WorkSource, the Employment Security Department and North Seattle Community College basic skills, workforce and education programs. The goal is streamlined, effective education, employment and social services in a positive environment designed to help clients succeed.



Students, faculty, and staff make Global Impact

Faculty, staff and students are extending their influence around the world by volunteering for the **Global Impact service learning** program developed at the Seattle Community Colleges. For the past five years the college community has joined Seattle healthcare professionals and community volunteers, pairing with local non-profit organizations to provide medical and dental services and sustainable infrastructure projects such as composting toilets and clean-burning stoves that contribute to the overall health of rural communities in Peru, Vietnam, Tanzania and India.

Although participants set out to make a difference in the lives of people in developing countries, they report the experience has made an even bigger change in their own lives. A close-up look at the 2009 Vietnam Village Trek was documented by World Nomads, whose **30-minute documentary** "Positive Footprints" (<http://vimeo.com/10856554>) was featured on CNN, National Geographic Channel and in-flight entertainment on more than 30 airlines.

Green is a winner for Seattle Community Colleges

Innovations in curriculum and operations earned a 2009 **Green Washington Award** for the Seattle Community Colleges. All three colleges are active members of the



Seattle Climate Partnership. Expanding awareness, along with establishment of a district-wide Chancellor's Sustainability Initiative (CSI), then earned recognition as a **2010 Innovation of the Year** from the League for Innovation in the Community College. CSI provides energy, focus and a

forum for emerging training and initiatives, including reducing the district carbon footprint, increasing programs with green curriculum, and promoting energy conservation and recycling. South earned a **"Recycler of the Year"** award when the college culinary operations diverted 31 tons of materials to the Cedar Grove regional composting facility—which returned the compost to "green" the campus landscape.

Students hire first Sustainability Coordinator

North Seattle was **ahead of the curve on campus-based sustainability and environmental awareness** when the college established a campus Sustainability Committee in 2005. By 2009, interest was so strong that students chose to set aside \$250,000 from their student fee account for a number of initiatives, including hiring a sustainability coordinator. This action jump-started a model program which includes campus-wide composting, energy conservation and adding sustainability concepts to the curriculum. Students have **conducted more than 2,000 hours of sustainability assessment projects** for the college as part of their coursework.



Photo: Greg Gilbert/ The Seattle Times

Carpentry students build eco-friendly house

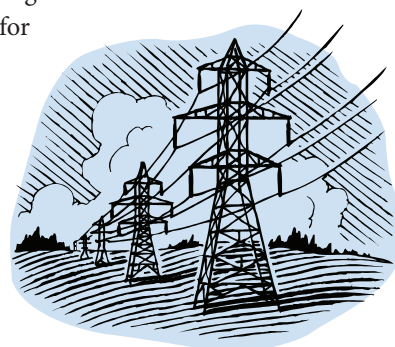
Carpentry students at Central's Wood Construction Center built a "Mini-Bungalow," a 300 square foot, eco-friendly,

energy-efficient modular residence that uses just 15% of the heating energy of similar houses, or an annual energy bill of just \$100. The "Mini-B" **could also be built as an addition or a studio or office.** The house was on display at Phinney Neighborhood Center for several weeks.



Conservation grant to save college energy costs

Seattle Central Community College has received a \$2 million grant for an energy conservation project that is expected to produce nearly **\$200,000 in annual energy and maintenance-related savings.** Funding comes from a state grant and Seattle City Light.



Student bike delivers energy and education

Student Dennis Skarr "re-cycles" energy with his original EcoBike, which generates energy and learning during workouts at the North Seattle Community College Wellness Center. Several ports on the bike can charge laptops or cell phones.



Community colleges make \$1 billion impact

A new study reports that the total impact of the Seattle Community Colleges on King County amounts to \$1.1 billion a year.

“The report confirms that the Seattle Community Colleges are vitally important to the overall strength of our region, but just as important, we affect the quality of life of thousands of individuals and families,” said Chancellor Jill Wakefield.

The report was produced in winter 2011 by Economic Modeling Specialists, Inc. (EMSI), which calculated economic impact based on the skills of graduates over 30 years; spending for college operations, including earnings of faculty and staff; and spending by students.

Approximately 97% of alumni remain in Washington and contribute to our state’s economic growth.

The report found that the **Seattle Community Colleges generate a 7% rate of return on investment** to state and local taxpayers.

Taxpayers see a cumulative return of \$1.90 for every dollar invested in support of the colleges, based on state and local tax collections of alumni in the workforce.

Students receive a 21.6% average rate of return on their educational investment. The average annual income of the typical associate’s degree graduate in King County at the midpoint of his or her career is \$60,600, which is 35% more than someone with a high school diploma.

Another sip of success

Since releasing its first five vintages in 2005, the Northwest Wine Academy at South Seattle Community College has consistently created award-winning, student-produced wines that have medaled at several prestigious competitions. NWA wines earned seven Grand Awards of Excellence (two Silver, two Bronze, and three Outstanding) from the 2010 Seattle Wine Awards Tasting Panel.



SAgE: urban agriculture program is national model

In summer, students at the Seattle Culinary Academy at Seattle Central Community College plant, tend and harvest crops on local farms. However, the new crop of chefs can now tend and harvest fresh herbs all year in their new Plant Science Laboratory on campus, known as the “Urban Greenhouse.” Seattle Central also **offers a potential model for metropolitan community colleges across the country** with its popular new Sustainable Agriculture Education (SAgE) program. SAgE investigates ecological, environmental, socioeconomic, political and cultural issues related to sustainable food systems, with classes such as Sustainable Food Systems Employment, Integrating Food and Forests, and Soil Science.



Old agricultural technique produces new rich soil

South Seattle

Community College is an active participant in Seattle’s Global Climate Change project to produce and test biochar, a porous charcoal substance that can turn poor soil



into a rich growing medium. South is field-testing biochar in a 12,000 square foot plot; Horticulture students grow corn in this plot, culinary students cook it and Washington State University is conducting nutrient-testing. This project adapts a centuries-old agricultural technique used by South American indigenous people and other cultures.



Clockwise from top: Central’s new greenhouse; fresh local produce for Culinary students; North’s wetlands; Culinary students at work.

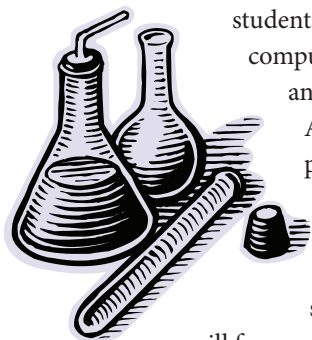
College can save \$40,000 and improve environment

North Seattle Community College hopes to absorb 100 percent of the rainwater that falls on its campus. Not only will this improve habitat in the campus wetlands and downstream Thornton Creek, but the college will save an estimated \$40,000 in stormwater utility taxes. Students are evaluating how existing trees can be managed and new trees planted to create a root biomass that will help the restoration process by filtering pollutants and absorbing excess water. North is working with University of Washington students to conduct water quality testing as part of the project.



NSF grants support students toward 4-year science and math degrees

The Seattle Community Colleges have been awarded \$3.2 million for two National Science Foundation projects that began fall quarter 2010. Both 5-year grants focus on increasing the number of students who enroll and succeed in science, technology, engineering, and mathematics (STEM) subject areas that are important to jobs in the regional economy.



Ready! Set! Transfer! is funded for \$2 million to encourage students to study fields ranging from astronomy, biology, chemistry, computer science and engineering, to nanotechnology, physics and sustainable agriculture. STEM students will take part in an Academy that includes a wraparound package of support from pre-college math through second-year courses and preparation for transfer.

The **ONSIGHT** Collaborative Scholarship will provide \$1.2 million over a five-year period for 170 student scholarships, student support services and project management. Scholarships will focus on talented, low-income students pursuing careers in STEM areas.

Colleges sponsor STEM – Workforce conference

The Seattle Community Colleges have joined Washington STEM, a statewide effort to make education in **science, technology, engineering and math (STEM) a priority for the region**. In May the colleges, along with Puget Sound Industrial Excellence Center (PSIEC) and the Manufacturing Industrial Council, sponsored a conference connecting STEM with Workforce Education. National and regional speakers examined the anticipated shortfall of qualified manufacturing and industrial workers in the region and created an action plan for greater cooperation between industry, labor, the public schools and the community colleges. (www.Stemagenda.com)

During the last year, the colleges also took part in a STEM Summit hosted by McKinstry Co. CEO Dean Allen, which brought together business and education leaders, foundations, and others to improve STEM education and opportunities in our region.

Community colleges play an important role in the STEM education continuum:

30-40% of STEM graduates from Washington's public universities are community college transfers

30-40% of STEM graduates from Washington's state public universities are community college transfers, and in 2008-09, nearly 2,800 Seattle Community College students were STEM majors.



\$2 million grant means more college grads

South Seattle Community College has been awarded a \$2 million grant from the U.S. Department of Education to help more students reach college graduation. The five-year "Strengthening Institutions" grant will focus on helping students achieve 45 college credits in preparation for transfer readiness. The college Student Success Task Force consulted with faculty, immigrant communities, feeder schools, community leaders and employers on this grant.

Local college grant develops into national model



Asian Pacific Islanders (API) comprise 25% of the student population and the majority of students of color at South Seattle Community College.

And now, thanks to a \$2.4 million grant from the U.S. Department of Education, greater numbers of them are ready for careers or 4-year degrees.

In 2008, the college was designated one of six Asian-American, Native-American, Pacific-Islander Serving Institutions (AANAPISI) in the country. The college developed a comprehensive, multi-faceted approach that involves API culture, families, clustered learning communities, a web-based virtual resource center, peer support techniques and pathways to four-year institutions. This approach has been a great success: The transition rate of English as a Second Language students from basic to regular college classes has already increased from 5% to 40%, and many students are currently in professional or transfer programs.

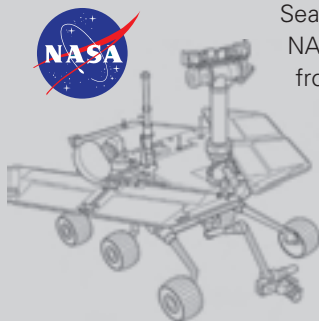
The AANAPISI program has become a national higher education resource, and the best practices that evolved are being adapted to aid all of South's students achieve success in college.

See our videos on the national resource site: www.aapiherc.southseattle.edu/en/college-success-videos

Prof an expert on Tunisia

Faculty member Jawed Zouari was part of a distinguished international panel assembled by the Henry M. Jackson School of International Studies to discuss current events in the Middle East at Town Hall in Seattle in May. Dr. Zouari, who teaches Political Science, History and Humanities at Seattle Central, recently completed a two-year Fulbright scholarship in Tunisia, and spoke about the democratic movement there. He was also a recent guest lecturer on this topic at the Martin Institute at the University of Idaho.

Central students study robotics at NASA



Seattle Central student **Ashley Allman** recently interned at the Johnson Space Center in Houston as part of the NASA Undergraduate Student Research Program. She was one of two community college students selected from more than 700 university and two-year applicants around the country and the only intern working on the Robonaut Tool Development Project. She had worked with robotics at NASA during a previous summer opportunity. Allman recently graduated from Central with an associate of science degree, Engineering emphasis, and is transferring to the Aeronautics / Astronautics Department at the University of Washington with a Boeing Endowed Scholarship.

Jessica Coleman is following in Allman's footsteps, earning a scholarship to study robotic rovers at NASA this spring. She is the only Washington community college student and one of just 80 community college students from across the country to be selected for this important opportunity.

South Seattle a destination for international professional groups

South Seattle Community College has hosted several international professional groups in recent months. A class of 30 French aviation maintenance students from the Association pour la Formation des Metiers de l'Aerien in **Massy, France** spent two weeks studying U.S. model airframe construction and airframe systems turbine engines. In December, South's International Programs office hosted 21 **Vietnamese Ministers of Public Security** for two weeks, as they toured city, county and state police organizations to study security-related best practices. Faculty and administrators from the Shanghai Vocational School of the **Civil Aviation Authority in China** participated in short-term studies and observations, and students from the **Kanagawa Institute of Technology** in Atsugi, Japan completed three weeks of study in English language and culture, automobile and aviation technology, biotechnology and chemistry.

International students positively impact the state

The Seattle Community Colleges were among 50 colleges and universities from across the country invited to take part in the **first education services trade mission** sponsored by the current presidential administration. Under Secretary of Commerce for International Trade Francisco Sanchez led the mission to Jakarta, Indonesia and Ho Chi Minh City and Hanoi, Vietnam, in spring 2011. The mission explored opportunities for international student recruitment and partnerships with higher education institutions in these two countries, which are two key export markets for U.S. companies. "Education is one of our most valuable exports,"

The economic impact of international students from the Seattle Community Colleges amounts to \$19.7 million/year

Sanchez said. **"The schools participating in this mission represent the best of what America has to offer international students."** Our District was represented by Seattle Central Community College President Paul Killpatrick, along with the district's chief International Education Programs administrator. Seattle Central has the largest international student enrollment among community colleges in the state and, according to the Institute for International Education, it is in the top 10 for enrollment among the 1,186 community colleges in the United States.

The Seattle Community College District is culturally enriched by more than 3,000 international students from more than 100 countries. Currently, the greatest numbers of students come to Seattle from Vietnam, China and Indonesia.

In addition to the cultural impact, international programs also make an impressive economic impact. According to a recent report by Economic Modeling Specialists, Inc., the economic impact of international students from the Seattle Community Colleges is \$19.7 million in King County every year.

North's magazine is best in the state

The Licton Springs Review, North Seattle Community College's literary and art magazine, received **first place in the 2010 statewide magazine** competition at the annual Washington Community College Humanities Association conference. The annual magazine publishes fiction, poetry, essays and art submitted by students, faculty and staff and selected from more than 500 submissions.

Licton Springs Review 2010 cover art, Long Journey, by Frank Peterson.



Photo courtesy of Chinese Garden Society



First Sichuan-style garden outside of China takes shape at South campus

In May, “Knowing the Spring” Courtyard welcomed its first visitors to the Seattle Chinese Garden, which is located adjacent to the South Seattle Community College arboretum. The Courtyard was built by 21 Chinese master artisans and features traditional elements including an elaborate tile-roofed entry gate, intricate

woodwork and stone paving, all from China. The landscape includes a water feature, and trees, plants and rocks native to China. This is the first Sichuan-style garden to be built outside of China.

‘The Garden is... bringing people together to learn about and strengthen our ties to China’

When completed, the garden will cover five acres, with courtyards, stone gardens, ponds, a tea house, a banquet area, and a 70-foot tower with views of Elliott Bay and downtown Seattle.

The project is a partnership with sister-city Chongqing, China. Sections are being built as money is raised, half by Seattle donors, and the other half by Chinese donors, for an estimated total of \$30 million. Meanwhile, Chongqing is working on a Seattle-style garden that will be part of its annual horticultural fair.

The Knowing the Spring Courtyard will be the site of festivals, performances, lectures and other activities that fulfill the educational and cultural mission of the Seattle Chinese Garden. “The Garden is serving the community by bringing people together to learn about and strengthen our ties to China, while building a unique gathering place and new cultural icon in the region,” said Richard Geiger, president of the Seattle Chinese Garden Board of Directors.



SCCtv’s IRIS is a portal for the world’s largest educational video producers

Emmy Award-winning Seattle Community Colleges Television (SCCtv) makes its mark on the city and the world with high quality educational and community programming and video production. Broadcasting to residents of Seattle on **Comcast Channel 28 and Broadstripe Channel 19**, SCCtv was created over a decade ago to deliver educational course content for instructors and students of the Seattle Community College District. SCCtv’s mission has grown to include all of North America and beyond through programming on its website and its cutting edge educational delivery system, IRIS Education Services. **IRIS serves as a portal for some of the world’s largest educational video producers**, providing the digital delivery system, hosting and streaming thousands of hours of educational content to hundreds of higher education institutions and tens of thousands of high schools and K-12 schools throughout the United States and Canada.

Read more about SCCtv at www.scc.tv and www.iriseducation.org

North alum recognized on national stage

North Seattle Community College alum Vivyan Adair was recognized with a **national Alumni of the Year award** at the Spring 2010 conference of the American Association of Community Colleges. A distinguished professor at Hamilton College in New York, Dr. Adair acknowledged “the brilliant and caring faculty at North who taught, challenged, nurtured and inspired me” to pursue a career in higher education.



Helping displaced workers to 'Start Next Quarter'

Even though the job outlook is improving, the number of dislocated workers remains high and employers report difficulty finding skilled workers to fill current job vacancies. To help both potential workers and employers, the Seattle Community Colleges developed Start Next Quarter (SNQ), a two-part initiative designed to improve the success of dislocated workers who enroll in technical education programs.

SNQ invites prospective students to assess their **eligibility for workforce funding online and connects them to a comprehensive two-day college success workshop held at each campus.** The workshops are based on a model developed by Seattle Vocational Institute. Students who complete the workshop are more likely to complete their training programs and to obtain jobs using their new skills.

The project was developed in part through a grant from the League for Innovation in the Community College, and funded by the Walmart Foundation Brighter Futures project to serve displaced workers, and was selected as a 2011 Innovation of the Year by the League for Innovation in the Community College.

...the number of dislocated workers remains high and employers report difficulty finding skilled workers to fill current job vacancies



www.startnextquarter.org

Campuses welcome service veterans

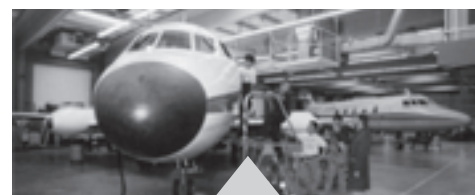


The GI Bill enacted at the close of World War II opened the doors to higher education for a generation of veterans who were the first in their families to attend college. The Post 9/11 GI Bill enacted in August 2009 is bringing a new generation of servicemen and women to the Seattle Community Colleges, which have been designated as "Military Friendly Schools" in recognition of a commitment to recruit and retain active military and veteran students and to serve their families. Each campus has a Veterans Club and colleges are working with VeteransCorps volunteer coordinators from AmeriCorps on a variety of special needs and programs to help veterans succeed.

FAA partners with North Electronics program

The Federal Aviation Association (FAA) and North Seattle Community College have a new partnership: North graduates with AAS degrees in either Electronics Technology or Electronics Engineering Technology will now **be considered for FAA internships and for on-the-spot hiring for permanent positions** when they are available. The FAA will also send incumbent workers in its Upward Mobility Program to North's programs for training, and will participate in career fairs and on the Electronics Technical Advisory Committee.

The initiative was finalized in February when the college signed a memorandum as part of the FAA Technical Operations – Collegiate Training Initiative. The FAA met with faculty, staff, support services and students, and reported **they had never seen such enthusiasm, and were "very impressed with the commitment of everyone involved at the college."**



South students win aerospace scholarships

The Pacific Northwest Aerospace Association has awarded \$500 scholarships to three students from South's Aviation Maintenance Technology program. Brian Allen, Jennie Robison, and Wesley Soares were recognized at the PNAA 2011 Aerospace Conference.

Seattle news conference marks White House Summit

TV and radio crews reported on a news conference held by the Seattle Community Colleges to mark the first-ever White House Summit on Community Colleges in October 2010. Chancellor Wakefield, college presidents and students focused on the role of community colleges in developing the country's workforce and increasing the number of college graduates by 2020. Students described how the Worker Retraining program is helping them to gain new skills that will put them back into jobs. Coinciding with the event, the Mayor's Office published a Proclamation declaring Tuesday, October 5, 2010 as Community College Day in Seattle.



Chancellor Wakefield at the microphone during a news conference at Seattle Central Community College.

College creates alternate routes to teaching credentials

Seattle Central Community College offers an alternative route to a teaching credential through its **Paraprofessional Pipeline**. The program trains paraprofessional teacher aides who want to teach in shortage areas such as math, special education and English Language Learning. Students study at Central for two years and then complete their studies at City University. Evening classes accommodate student work schedules. The Washington State Legislature has funded conditional full-tuition loans for students who complete their programs on a timely schedule at both Central and City U. A year of their loan amount will be forgiven for every two years the student teaches after graduation.

Also at Central, the ongoing Future Teachers of America (FTA) program is transferring 15 students a year to University of Washington education programs, with a focus on candidates from under-represented groups. The first cohort of students is now working on their Master's in Teaching degrees, including the four Central graduates pictured here. Each of these future teachers **attributes her**



April Saetern, Vicki Chen, Shannon Black and Teneicia Michelle Gardner transferred from Central to UW College of Education.

These students 'come with a deep commitment to diversity and educational access'

success to "solid preparation from Seattle Central and a defined pathway through the education system."

These students bring "a different perspective to the classroom conversation because of their experiences in higher education as transfer students," says UW education instructor and advisor Jenee Myers. "They come with a **deep commitment to diversity and educational access as the first in their families to attend college.**"

Our students are top winners

The Seattle Community Colleges continue to have more transfer students accepted at UW Seattle than any other community college, and our students do as well or better than those who started at UW as freshmen.

Danna Culhane from South, a member of the 2011 All-Washington Academic Team, was one of three students statewide who received scholarships from the State Trustees Association, and was awarded a prestigious Martin Achievement Scholarship to UW. She was also chosen as a national Coca-Cola New Century Scholar.

Transfer students from the Seattle Community Colleges were honored with the **President's Medal** at graduation **from the University of Washington** for the last three out of four years.

Jennifer Vahora, from South Seattle Community College, graduated in 2010 with degrees in anthropology and public health, and plans to pursue a graduate degree and a career in global health.

Laura Hinton, from North Seattle Community College, received a degree in anthropology in 2009 with plans for a master's in nursing and a goal of promoting access to healthcare for marginalized populations.

Elise Saba, also from North, graduated from UW in 2007 with an English degree. Her first fiction writing was published in *The Daily*, the UW student newspaper; she also served as president of the UW Swing Kids dance club.



Smile—Dr. Pollene Speed-McIntyre one of Seattle's 'Top Dentists'



Dr. Pollene Speed-McIntyre has been selected by her peers as one of the Top Dentists in the Pacific Northwest for 2011 by Seattle Magazine. Dr. Speed

serves as the Dental Clinic Director for the Seattle Vocational Institute Dental Clinic. She has been a faculty member for 15 years and has a career commitment to helping under-served populations whose oral healthcare is often neglected. She has also been named one of America's Best Dentists by the Consumers' Research Council of America, and has been inducted into the International College of Dentists.

South's Automotive Technology program in overdrive

Tomorrow's Technician automotive magazine has selected South's Automotive Technology program as one of the top four schools in the fourth annual Automotive School of the Year competition, from over 100 nominated schools.





Georgetown Campus continues to grow

The Georgetown Campus of South Seattle Community College began construction on an addition to the Gene Colin Building, thanks to a \$4 million grant from the U.S. Economic Development Agency. This grant, combined with \$1 million from the Washington State Legislature and \$200,000 from the Norcliffe Foundation, is funding a LEED-certified 9,000 square-foot addition for classrooms and expanded opportunities for industry partnerships.

Early this year the Labor Center was welcomed to the collaborative campus environment at Georgetown, whose strategic advisory committee includes representatives of education, business, labor, government, economic development organizations and community groups. It joins the Apprenticeship & Education Center and the Puget Sound Industrial Excellence Center (PSIEC), which focus on economic development, green jobs training and the workforce education needs of the Duwamish industrial corridor and surrounding low-income communities. **More than 4,000 apprentices in more than 20 different trades—25% of the state's total—are trained at Georgetown.**

Vision 2040 and Governor's awards

The Georgetown Campus received a 2009 "Vision 2040" award from the Puget Sound Regional Council for its commitment to workforce development now and into the future. By 2040 the region is expected to grow by 1.7 million people and 1.2 million new jobs. The campus also earned the Governor's Economic and Workforce Development Award for 2008.

Read more news at www.seattlecolleges.edu/district/chancellor/blog.aspx

For your reading / viewing list...



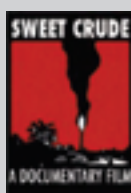
South English faculty member **Judy Bentley** has written *Hiking Washington's History*, published by the University of Washington Press. Curious hikers and history buffs alike can appreciate the regional history and trail narratives of 40 historically significant hikes throughout Washington state.



Lydia Minatoya, a lead counselor at North, has published her first novel, *The Strangeness of Beauty*. It was nominated for the PEN Hemingway Award, the National Book Award, and the International Impact Literary Award for best literary novel published in English.



Carl Livingston, political science instructor at Central, is author of *Shoestrings and Bootstraps: A Development Plan for Black America*, published by Classical Day Publishing in Seattle in 2008. Written in a response to a Black Dollar Days Task Force request to develop a self-help plan to develop Black America, *Shoestrings* presents a comprehensive plan for economic development of poor communities of any ethnicity or culture.



Arleen Williams, ESL faculty member at South, has work published in a new anthology, *Sunday Ink: Works by the Uptown Writers*, with works by members of her writing group. Williams' work in the anthology was developed, in part, during a memoir class she offered last spring.

Central Film & Video instructor and filmmaker **Sandy Cioffi** continues to win awards around the world for her documentary *Sweet Crude*. Most recently, the film received Best International Film honors at the Planet in Focus International Environmental Film & Video Festival in Toronto, Ontario, Canada.



NORTH Seattle Community College

Mark Mitsui
President

Located in a residential neighborhood five miles north of downtown, the North Seattle Community College campus includes environmentally sensitive wetlands which have inspired a college-wide commitment to sustainability.

North is the starting point for many students who transfer to top universities. Strong academic preparation, small classes, an innovative integrated studies program, broad eLearning options and partnerships with four-year schools facilitate transfer and support student success. North also provides outstanding career training in programs from Nanotechnology to Business to Electronics and many healthcare areas.

Did you know that North—

- consistently ranks high in the number of community college transfer students accepted at UW Seattle
- has one of the first one-stop locations for state employment, social services and education in the nation (p.5)
- students have conducted more than 2000 hours of sustainability assessment projects (p. 6)
- literary magazine, The Licton Springs Review, took first place in a 2010 statewide competition (p. 9)

Read more about the college and the president at www.northseattle.edu

NORTH ALUMNI SPOTLIGHT

MJ McDermott's success was forecast when she took math and science at North Seattle Community College

M.J. McDermott is the Emmy-nominated meteorologist on the KCPQ Channel 13 FOX News This Morning. She came to North Seattle Community College in the late 1990s to begin a career change. After a career in acting in New York and Seattle, followed by the birth of twin sons, M.J. decided to become a TV meteorologist. She enrolled at North to earn the math, physics and computer prerequisites, and transferred to the University of Washington, earning her degree in Atmospheric Sciences In 2001. From Northwest Cable News she moved to KCPQ In 2002 and eventually became the morning weather anchor. M.J. praises the math, science and computer skills courses and faculty at North for providing an excellent foundation for her new profession.





SOUTH Seattle Community College

Gary Oertli
President

South Seattle Community College overlooks downtown Seattle and Elliott Bay from an 87-acre wooded campus in West Seattle. The college is distinguished by its innovative career training programs, a University Center and new Bachelor of Applied Science (BAS) degrees in Hospitality Management and Professional Technical Teacher Education.

The main campus features a six-acre Arboretum which serves as an outdoor classroom, and is adjacent to the Seattle Chinese Garden. The Georgetown Campus houses the Apprenticeship & Education Center, Puget Sound Industrial Excellence Center and the Labor Education & Research Center.

Did you know that South—

- originated the 13th Year Promise Scholarship program for local high school seniors (p. 5)
- is home to the award-winning Northwest Wine Academy (p. 7)
- pioneered the I-BEST curriculum, now a national model, for non-native speakers
- is host to the Seattle Chinese Garden (p. 10)

Read more about the college and the president at www.southseattle.edu

SOUTH ALUMNI SPOTLIGHT



Ciscoe Morris started to bloom in the Landscape Horticulture program at South Seattle Community College

Ciscoe Morris enrolled in the Landscape Horticulture program at South Seattle Community College in the early 1970s. “The program stressed two things,” he says, “having the right skills and the right attitude. If you have these, you can’t fail.” Ciscoe went on to earn his master’s degree from Seattle University, where he was Grounds Manager for 24 years. He is a Master Gardener, certified arborist and teacher at the UW Center for Urban Horticulture. With his humorous style—and his signature exclamation “Oh-la-la!”—Ciscoe regales his fans throughout the Pacific Northwest with gardening tips. His weekly radio show “Gardening with Ciscoe” airs on 710 KIRO News Radio and “Gardening with Ciscoe & Meeghan Black” airs on KING 5-TV. His latest book is *Ask Ciscoe: Oh, la, la! Your Gardening Questions Answered*.



Seattle CENTRAL Community College

Paul Killpatrick
President

Seattle Central Community College is located on Capitol Hill, a vibrant neighborhood that reflects the diversity and activity of the city. The campus is minutes from downtown Seattle and accessible from every part of the city via public transportation that will be enhanced by the arrival of the new Seattle Trolley line in 2013 and a Link Light Rail station in 2016.

Seattle Central students come to the campus from all backgrounds and cultures and from more than 50 countries. In addition to strong college transfer programs, students can choose career training pathways that include the Creative Academy, Wood Construction, the renowned Seattle Culinary Academy and a new Bachelor of Applied Behavioral Science degree.

Did you know that Central—

- was recently cited in a New York Times “Education Life” article as one of the top ten transfer programs across the nation
- has two students recently selected from hundreds of applicants to study robotics at NASA’s facilities (p. 9)
- has developed a website where faculty and staff share their inspirational stories of being first in their families to attend college. Read them at www.seattlecentral.edu/firstgen/index.php

Read more about the college and the president at www.seattlecentral.edu

CENTRAL ALUMNI SPOTLIGHT



Tony Gable put the finishing touches on his graphic design education at Seattle Central Community College

A graduate of Central’s Graphic Design and Illustration program, Tony Gable recently developed new logos for King County and for Seattle Central. Gable studied art at Western Washington University before graduating from Central’s professional program. He created the Gable Design Group in 1985, intentionally hiring a culturally and ethnically diverse team, including other Central grads. Gable continues to speak and mentor at Central and comments, “Central rocks!” Design is not Gable’s only passion—he is also a musician who spent five years as percussionist for Kenny G, and later founded his current jazz band “Gable & 206.”





Seattle Vocational Institute (SVI)

Seattle Vocational Institute, located in the city's Central District, is a division of Seattle Central Community College. It has developed the area's largest delivery system for short-term workforce training and education leading directly to employment.

Each year more than 1,200 students enroll in the Business Computer, Medical, Dental, Cosmetology and Multiple Trades programs. SVI also offers English as a Second Language, Adult Basic Education and GED preparation to assist students with basic skills they need to begin training and employment.

Read more about the campus at <http://sviweb.sccd.ctc.edu>

Donation funds internships at UW Med Center and Group Health for Bright Future students

Bright Future, the **award-winning program** for high school students at Seattle Vocational Institute, is using a generous donation to create paid internships in the Medical Assistant and Medical Administrative Specialist programs. Students benefit financially and receive valuable hands-on training at UW Medical Center and Group Health Hospital. Group Health's 24/7 schedule allows students to work at the main GH campus on weekends, evenings or Mondays, and attend classes full-time the rest of the week. After they commit to the internship for three months, students choose their areas of interest, receive two days of training, and then join units such as Maternity or Urgent Care, where they connect skills learned in the classroom with practice in a real-world hospital setting.

Bright Future is funded through Running Start, and gives students an opportunity to earn their high school diplomas and a workforce training certificate at the same time. The program's **highly successful case management approach** has resulted in a 93% high school graduation rate over the past five years, with 76% of those graduates simultaneously completing a certificate in one of SVI's programs.

SVI ALUMNI SPOTLIGHT

Nathan Rich uncovers hidden talents and finds purpose at SVI

Reacting to his unconventional upbringing and schooling, Nathan Rich at 17 found himself homeless and poorly educated. Looking for a fresh start, the self-described "bored and self-destructive" young man decided to move to Seattle, where at SVI, he entered the 9-month Network Technician program—and stepped into a world waiting for his hidden talents. Rich absorbed all the skills, the work-study projects, and the customized learning challenges created by his instructors. After completing his studies, he moved to L.A., where he first managed a major media web-hosting company, and is now Senior Systems Administrator and Network Architect at Luma Pictures, which creates visual effects and computer graphics for movies such as *Harry Potter*. Now 29, Nathan Rich loves his work and healthy income. He credits his success to "the inspiration of SVI, the instructors, and the real and flexible education."



Leadership *at the Seattle Community Colleges*

Board of Trustees

The Seattle Community College District is governed by a five-member Board of Trustees appointed by the Washington State Governor and approved by the State Senate for sequential five-year terms. The primary responsibility of the Board of Trustees is to meet the changing educational needs of the community while reflecting the community's values in fulfilling the college mission.

Trustees certify the consistency of college missions and goals, formulate policy, and ensure effective leadership and responsible use of resources. They are responsible for hiring the chancellor, who is the chief executive officer of the Seattle Community College District and reports to the Board.



Trustees Albert Shen and Tom Malone with U.S. Rep. Jim McDermott at the Winter 2011 American Association of Community Colleges National Legislative Summit in Washington D.C., where they discussed Pell Grants and other issues affecting higher education.

Current Board Members



Constance W. Rice is Managing Director for Knowledge Management for Casey Family Programs.



Gayatri Eassey is Interim Executive Director of Career Services at Seattle University.



Jorge Carrasco is Superintendent of Seattle City Light.



Thomas Malone is principal in the law firm Malone and Associates, PS, and CEO of Professional Escrow Services, LLC.



Albert Shen is principal and owner of Shen Consulting, Inc., civil engineering specialists.



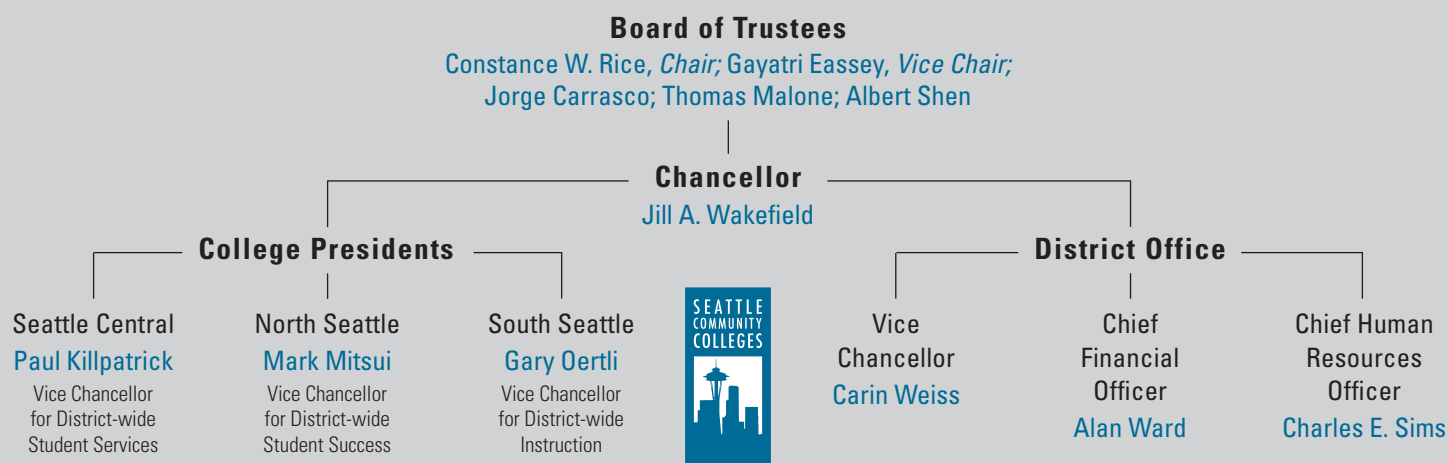
Jill A. Wakefield, *Chancellor*

Dr. Jill Wakefield is a visionary leader recognized for the depth of her experience in community college education and for developing innovative solutions and strategic partnerships. She became Chancellor of the Seattle Community Colleges in January 2009, after a long career at South Seattle Community College that included five years as college president. She sits on the boards of several regional institutions and non-profits, and has received numerous awards and accolades.

Chancellor Wakefield represents the district as leader and advocate at local, regional, state and national organizations. The Chancellor's senior leadership team includes a Vice Chancellor, Chief Financial Officer and Chief Human Resources Officer, who are responsible for district-wide functions and activities. The Chancellor is also responsible for district-wide international programs, Seattle Community Colleges Television, and the offices of community and government partnerships, communications and institutional advancement.

The chancellor hires the individual college presidents, who are responsible for the operation and management of the three colleges. The presidents also serve as Vice-Chancellors responsible for coordinating district-wide areas of instruction, student services and student success.

Read more about District Leadership at www.seattlecolleges.edu/district



Certificates, Degrees & Careers

Seattle Community Colleges educate and train thousands of students whose added skills translate to a more robust workforce and economy in the Puget Sound region.

College Transfer Degrees

- Associate of Arts
- Associate of Science
- Associate of Applied Science – Transfer
- Associate in Business
- Associate in Elementary Education
- Associate of Fine Arts
- Associate in Math Education
- Courses in...
 - Humanities & Arts
 - Mathematics
 - Natural & Physical Sciences
 - Social Sciences

Bachelor of Applied Science (BAS) Degrees

- Applied Behavioral Science
- Hospitality Management
- Professional Technical Teacher Education

Basic Education

- Adult Basic Education & Transitional Studies, English as a Second Language, General Education Development, High School Completion

Continuing Education / Lifelong Learning

- Professional & Personal Development
- Contract Training

Distance Learning

- Online, Hybrid, Videostreaming, Videotape, DVD and Correspondence courses

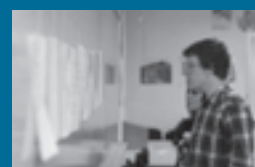
International Students / Education

- Intensive English / ESL, College Bridge, College Transfer or Professional / Technical programs

Workforce Education Professional / Technical Programs

Degrees, Certificates and/or Short-term
"Stackable" Certificates available in—

- Arts & Design
 - Apparel Design, Graphic Design, Commercial Photography
- Automotive Technology / Diesel
- Aviation Maintenance / Aeronautical Technologies
- Business / Accounting / Logistics / Management
- Communication, Business & Media
- Construction / Building Trades / Apprenticeship Training / Green Jobs Training
- Cosmetology
- Culinary Arts / Food Production / Pastry / Wine Industry Training
- Drafting / Architectural Engineering / CAD / BIM
- Early Childhood Education
- Electronics / Engineering / Telecommunications / HVAC
- Green Jobs & Technologies
 - Green Construction, Residential Energy Audits & Weatherization, Sustainable Building Management, Sustainable Conventional Energy & Control Technology
- Health-Related Occupations
 - Chemical Dependency, Dental, EMT, IT, Medical Assisting, Transcription & Office, Nursing, Opticianry, Anesthesia, Pharmacy, Respiratory and Surgical Technologies
- Information Technology
- Landscape Horticulture
- Maritime Training / Seattle Maritime Academy
- Nanotechnology
- Real Estate
- Sign Language
- Social & Human Services
- Watch Technology
- Welding
- Wood Construction / Carpentry / Boatbuilding



What people are saying

“Higher education and training are keys to a competitive region. We appreciate the work and innovation of the Seattle Community Colleges in developing programs and graduates to help Seattle remain a national leader in implementing sustainable technologies.”

~ **Dean Allen**
CEO, McKinstry

“Education is one of our most valuable exports, and the schools participating in this trade mission [including Seattle Community Colleges] represent the best of what America has to offer international students.”

~ **Francisco Sánchez**
Under Secretary of Commerce for International Trade

“Northwest Hospital & Medical Center / UW Medicine values its long-standing relationship with Seattle Community Colleges and recognizes the benefit of the partnership as a way to supply talented, motivated, and caring employees to the healthcare industry. These graduates play key roles in all levels of our organization and are essential in helping carry out our mission to raise the long-term health status of our community by providing personalized, quality care with compassion, dignity, and respect.”

~ **Erik Walerius**
Director, Clinical Services Development
Northwest Hospital & Medical Center / UW Medicine

NORTH Seattle Community College

9600 College Way North
Seattle, Washington 98103
206.934.3600
www.northseattle.edu

SOUTH Seattle Community College

6000 16th Ave. SW
Seattle, Washington 98106
206.934.5300
www.southseattle.edu

Seattle CENTRAL Community College

1701 Broadway
Seattle, Washington 98122
206.934.3800
www.seattlecentral.edu

Seattle Vocational Institute (SVI)

2120 So. Jackson
Seattle, Washington 98144
206.934.4950
<http://sviweb.sccd.ctc.edu>

District Office

Siegal Administrative Center
1500 Harvard Ave.
Seattle, Washington 98122
206.934.4100
www.seattlecolleges.edu

Specialized Training Centers

Georgetown Campus ■ NewHolly Learning Center
Seattle Maritime Academy ■ Wood Construction Center

Distance Education/eLearning

Worldwide Virtual Campus
www.seattlecolleges.edu/distance



The Seattle Community College District is a charter member of the League for Innovation in the Community College



Seattle Community Colleges

CENTRAL
NORTH
SOUTH
SVI



Chancellor's Office
1500 Harvard Avenue
Seattle, WA 98122

206.934.3872
CO@seattlecolleges.edu
www.seattlecolleges.edu